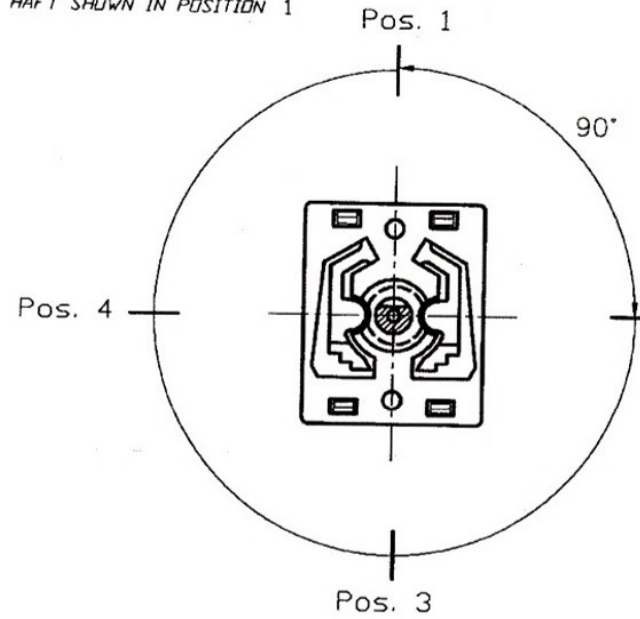
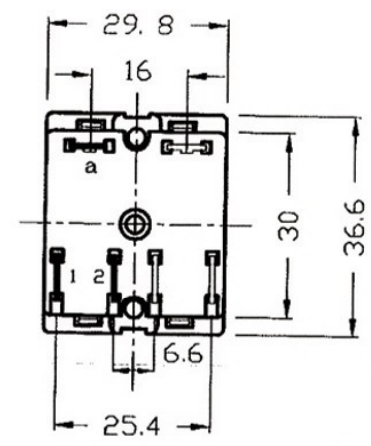
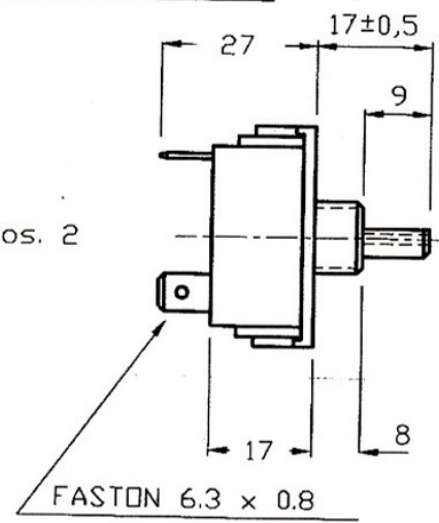


1 2 3 4 5 6 7 8

EJE EN POSICION  
HAFT SHOWN IN POSITION 1



FIJACION/FIXING  
M12 x 1,5

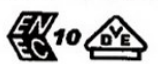


FASTON 6.3 x 0.8

SCHEMA DI COLLEGAMENTO

		POSICIONES POSITIONS			
		1	2	3	4
CIRCUITOS CONTACTS	1	●	●	●	●
	2	●	●	●	●

OMOLOGAZIONI



10(3)A 250V ~

TEMPERATURA: 125° C  
TEMPERATURE:

Component conforming to the European Directive 2002/95/EC RoHS

SERIE: X-02

DO NOT SCALE DRAWING

1 2 3 4 5

A  
B  
C  
D